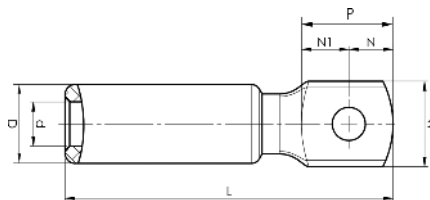




ELPRESS®

Product Datasheet



Aluminium terminals 16 - 1200 mm²

| Stranded Al mm ² | Solid Al mm ² | AWG | AWG Al (Solid Al) | Name | Screw | W (mm) | d | D | N | N1 | P | L | t | s | Tool | Pcs/ pack |
|-----------------------------|--------------------------|------|-------------------|---------------|-------|--------|------|----|-----|------|------|-----|------|-----|-------------------|-----------|
| 16 | 25 | 6 | 4 | AK16-6 | M6 | 16 | 5,9 | 13 | 8,5 | 9 | 17,5 | 61 | 5 | 29 | V600, V1300, V250 | 48 |
| 16 | 25 | 6 | 4 | AK16-8 | M8 | 16 | 5,9 | 13 | 8,5 | 9 | 17,5 | 61 | 5 | 29 | V600, V1300, V250 | 48 |
| 25 | 35 | 4 | 2 | AK25-6 | M6 | 16 | 6,8 | 13 | 8,5 | 9 | 17,5 | 61 | 5 | 29 | V600, V1300, V250 | 48 |
| 25 | 35 | 4 | 2 | AK25-8 | M8 | 16 | 6,8 | 13 | 8,5 | 9 | 17,5 | 61 | 5 | 29 | V600, V1300, V250 | 48 |
| 35 | 50 | 2 | 1/0 | AK35-6 | M6 | 22 | 8,5 | 20 | 11 | 14 | 25 | 85 | 7,5 | 45 | V1300, V250 | 24 |
| 35 | 50 | 2 | 1/0 | AK35-8 | M8 | 22 | 8,5 | 20 | 11 | 14 | 25 | 85 | 7,5 | 45 | V1300, V250 | 24 |
| 35 | 50 | 2 | 1/0 | AK35-10 | M10 | 22 | 8,5 | 20 | 11 | 14 | 25 | 85 | 7,5 | 45 | V1300, V250 | 24 |
| 50 | 70 | 1/0 | 2/0 | AK50-8 | M8 | 22 | 9,6 | 20 | 11 | 14 | 25 | 85 | 7,5 | 45 | V1300, V250 | 24 |
| 50 | 70 | 1/0 | 2/0 | AK50-10 | M10 | 22 | 9,6 | 20 | 11 | 14 | 25 | 85 | 7,5 | 45 | V1300, V250 | 24 |
| 50 | 70 | 1/0 | 2/0 | AK50-12 | M12 | 27 | 9,6 | 20 | 14 | 15 | 29 | 90 | 6 | 45 | V1300, V250 | 24 |
| 70 | 95 | 2/0 | 4/0 | AK70-8 | M8 | 22 | 11,3 | 20 | 11 | 14 | 25 | 85 | 7,5 | 45 | V1300, V250 | 24 |
| 70 | 95 | 2/0 | 4/0 | AK70-10 | M10 | 22 | 11,3 | 20 | 11 | 14 | 25 | 85 | 7,5 | 45 | V1300, V250 | 24 |
| 70 | 95 | 2/0 | 4/0 | AK70-12 | M12 | 27 | 11,3 | 20 | 14 | 15 | 29 | 90 | 6 | 45 | V1300, V250 | 24 |
| 95 | 120 | 4/0 | 250 | AK95-8 | M8 | 27 | 12,5 | 25 | 14 | 15 | 29 | 104 | 10,5 | 60 | V1300, V250 | 24 |
| 95 | 120 | 4/0 | 250 | AK95-10 | M10 | 27 | 12,5 | 25 | 14 | 15 | 29 | 104 | 10,5 | 60 | V1300, V250 | 24 |
| 95 | 120 | 4/0 | 250 | AK95-12 | M12 | 27 | 12,5 | 25 | 14 | 15 | 29 | 104 | 10,5 | 60 | V1300, V250 | 24 |
| 120 | 150 | 250 | 300 | AK120-10 | M10 | 27 | 14 | 25 | 14 | 15 | 29 | 104 | 10,5 | 60 | V1300, V250 | 24 |
| 120 | 150 | 250 | 300 | AK120-12 | M12 | 27 | 14 | 25 | 14 | 15 | 29 | 104 | 10,5 | 60 | V1300, V250 | 24 |
| 150 | 185 | 300 | 350 | AK150-10 | M10 | 27 | 15,8 | 25 | 14 | 15 | 29 | 104 | 10,5 | 60 | V1300, V250 | 24 |
| 150 | 185 | 300 | 350 | AK150-12 | M12 | 27 | 15,8 | 25 | 14 | 15 | 29 | 104 | 10,5 | 60 | V1300, V250 | 24 |
| 150 | 185 | 300 | 350 | AK150-16 | M16 | 35 | 15,8 | 25 | 21 | 23 | 44 | 119 | 8 | 60 | V1300, V250 | 12 |
| 185 | 240 | 350 | 500 | AK185-10 | M10 | 35 | 17,6 | 32 | 16 | 18,5 | 34,5 | 113 | 13 | 61 | V1300, V250 | 12 |
| 185 | 240 | 350 | 500 | AK185-12 | M12 | 35 | 17,6 | 32 | 16 | 18,5 | 34,5 | 113 | 13 | 61 | V1300, V250 | 12 |
| 185 | 240 | 350 | 500 | AK185-16 | M16 | 35 | 17,6 | 32 | 16 | 18,5 | 34,5 | 113 | 13 | 61 | V1300, V250 | 12 |
| 240 | | 500 | | AK240-12 | M12 | 35 | 19,8 | 32 | 16 | 18,5 | 34,5 | 113 | 13 | 61 | V1300, V250 | 12 |
| 240 | | 500 | | AK240-16 | M16 | 35 | 19,8 | 32 | 16 | 18,5 | 34,5 | 113 | 13 | 61 | V1300, V250 | 12 |
| | 300 | | 600 | AK300-12SOLID | M12 | 41 | 20 | 36 | 18 | 25 | 43 | 154 | 14 | 83 | V250 | 6 |
| | 300 | | 600 | AK300-16SOLID | M16 | 41 | 20 | 36 | 18 | 25 | 43 | 154 | 14 | 83 | V250 | 6 |
| 300 | | 600 | | AK300-12 | M12 | 41 | 22 | 36 | 18 | 25 | 43 | 154 | 14 | 83 | V250 | 6 |
| 300 | | 600 | | AK300-16 | M16 | 41 | 22 | 36 | 18 | 25 | 43 | 154 | 14 | 83 | V250 | 6 |
| 300 | | 600 | | AK300-20 | M20 | 41 | 22 | 36 | 20 | 23 | 43 | 154 | 15 | 83 | V250 | 6 |
| 400 | | 750 | | AK400-12 | M12 | 41 | 25 | 40 | 18 | 25 | 43 | 155 | 15 | 83 | V250 | 6 |
| 400 | | 750 | | AK400-16 | M16 | 41 | 25 | 40 | 18 | 25 | 43 | 155 | 15 | 83 | V250 | 6 |
| 400 | | 750 | | AK400-20 | M20 | 41 | 25 | 40 | 20 | 23 | 43 | 155 | 15 | 83 | V250 | 6 |
| 500 | | 1000 | | AK500A-16 | M16 | 55 | 28 | 52 | 26 | 29 | 55 | 225 | 20 | 110 | V250 | 1 |
| 500 | | 1000 | | AK500A-20 | M20 | 55 | 28 | 52 | 26 | 29 | 55 | 225 | 20 | 110 | V250 | 3 |
| 500 | | 1000 | | AK500A-1 | | 55 | 28 | 52 | | | 80 | 250 | 20 | 110 | V250 | 3 |
| 500 | | 1000 | | AK500A-2 | | 70 | 28 | 52 | | | 80 | 250 | 16 | 110 | V250 | 3 |
| 500 | | 1000 | | AK500B-16 | M16 | 44 | 28 | 44 | 22 | 22 | 44 | 174 | 16 | 83 | V250 | 3 |
| 500 | | 1000 | | AK500B-20 | M20 | 44 | 28 | 44 | 22 | 22 | 44 | 174 | 16 | 83 | V250 | 3 |
| 500 | | 1000 | | AK500B-1 | | 44 | 28 | 44 | | | 80 | 210 | 16 | 83 | V250 | 3 |
| 500 | | 1000 | | AK500B-2 | | 70 | 28 | 44 | | | 80 | 210 | 16 | 83 | V250 | 3 |
| 630 | | 1250 | | AK630A-1 | | 55 | 32 | 52 | | | 80 | 250 | 20 | 110 | V250 | 3 |
| 630 | | 1250 | | AK630A-2 | | 70 | 32 | 52 | | | 80 | 250 | 16 | 110 | V250 | 3 |
| 800 | | 1600 | | AK800-1 | | 60 | 36 | 60 | | | 80 | 267 | 20 | 129 | V1470 | 1 |
| 800 | | 1600 | | AK800-2 | | 75 | 36 | 60 | | | 80 | 275 | 17 | 129 | V1470 | 1 |
| 1000 | | 2000 | | AK1000-1 | | 60 | 40 | 60 | | | 80 | 267 | 20 | 129 | V1470 | 1 |
| 1000 | | 2000 | | AK1000-2 | | 75 | 40 | 60 | | | 80 | 275 | 17 | 129 | V1470 | 1 |
| 1200 | | 2500 | | AK1200 | | 75 | 44 | 70 | | | 80 | 291 | 17 | 142 | V1470 | 1 |

t = palm thickness, s = strip length



ELPRESS®