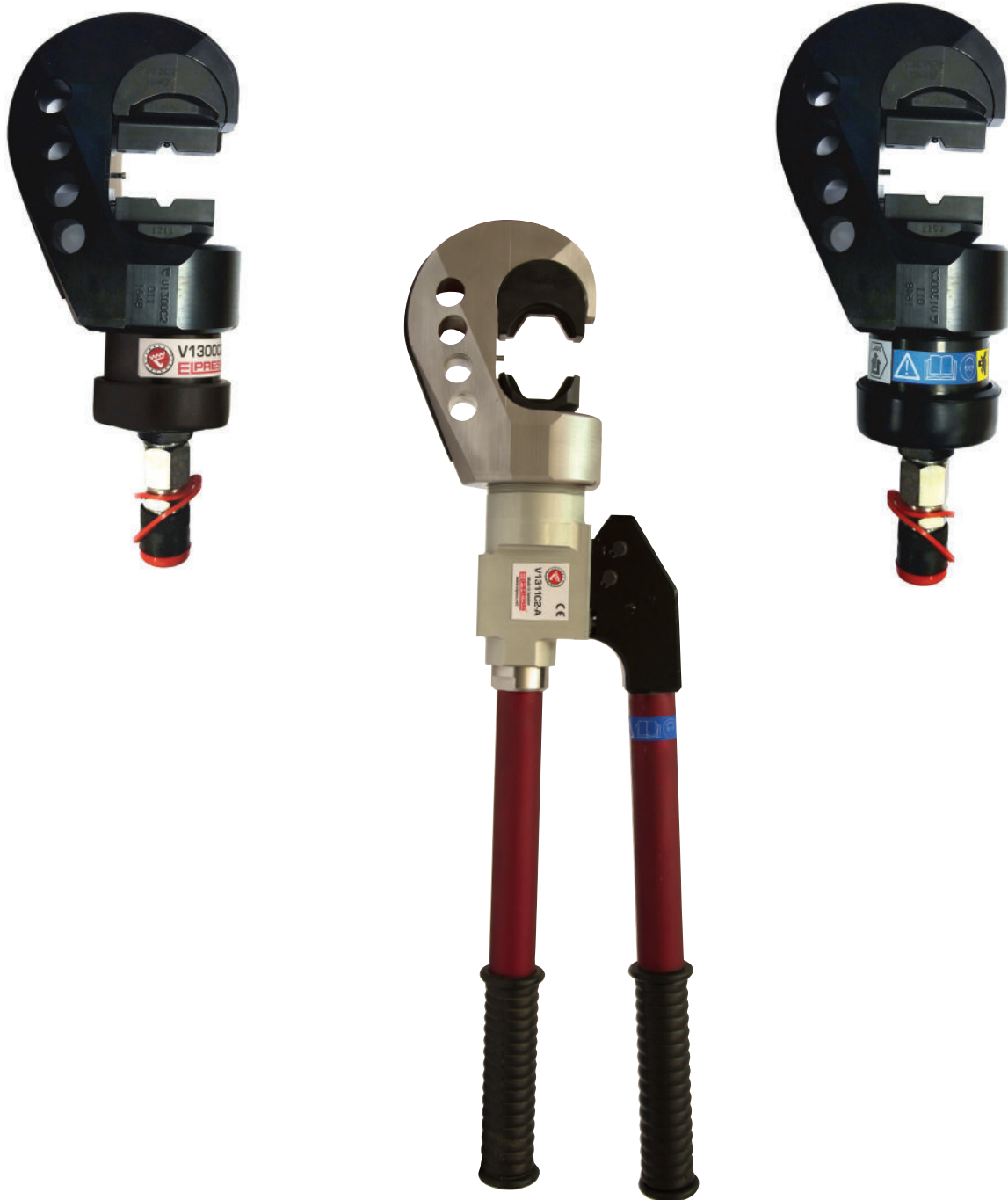


V1300C2, DV1300C2 V1311C2-A



V1300C2, DV1300C2, V1311C2-A

Crimping of Cu terminals 10 - 400 mm²



V1300C2

Crimp head for crimping of Cu terminals 10-400 mm² and C-sleeves up to 120 mm². Used with footpump P4000 or battery/mains powered pump PS710.

Particulars:

- lockable and rotatable handle (360°)
- equipped with oil spray safety protection cap
- working pressure 63 MPa (630 bar)
- crimp force 130 kN
- flexible and easy to operate
- weight 4,9 kg excl accessories
- length 297 mm, incl fork and quick coupling



DV1300C2

C-fork type crimp head, open to one side, used with footpump P4000 or battery/mains powered pump PS710.



Particulars:

- lockable and rotatable handle (360°)
- crimp head with the patented DUAL CRIMP technique which starts with an optimized hexagonal crimp and then makes a small indent in the same crimp cycle to further improve gas tightness as well as electrical and mechanical properties.
- DUAL dies are available for 10-300 mm²
- crimp terminals type KRF and through connectors type KSF
- conventional dies as for V1300C2 can be used (without DUAL-function)
- DV1300C2 can also be used with regular crimp dies for the 1300C-system



V1311C2-A

Hydraulic handtool, uses the same die system as V1300C2.

Particulars:

- automatic two-step fast feed system
- full closure system which guarantees a complete crimp
- the fork is rotatable 180°
- crimp force 130 kN
- ergonomically shaped handles
- easy to carry and operate
- covers the common needs of Cu-crimping for electricity utilities
- weight 5,9 kg, excl accessories
- length 626 mm
- crimp range 10-400 mm²
- incl. carry box



Accessories for Cu crimping with V1300C2, DV1300C2, V1311C2-A

- Note that KRF terminals may be used on flexible (IEC60228, class 5) as well as stranded (class 2) conductors and that KRD and KRT terminals are used on stranded conductors.
- Be sure to use dies exactly matching the terminal.
- Die holder V1330 is designed to allow crimping of straight as well as angular terminals.
- We recommend using the Dual System for multi-stranded Cu conductors.

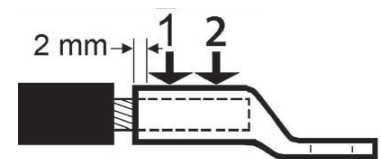
Crimp dies for hexagonal crimping of Cu terminals and connectors

Supplied as a pair.

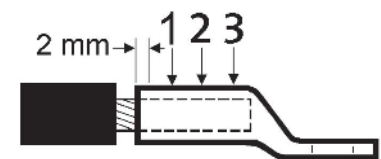
All dies type 13DCBxx (DUAL) and 13CBxx are used without die holder.

All dies type Bxx are used with die holder V1330.

KRF/KSF						
mm ²	DUAL Dies	No. of crimps	Dies	No. of crimps	Integrated dies	No. of crimps
10	13DCB8	1	B8	1	13CB8	1
16	13DCB9	1	B9	1	13CB9	1
25	13DCB11	1	B11	1	13CB11	1
35	13DCB13	1	B13	1	13CB13	1
50	13DCB14,5	1	B14,5	1	13CB14,5	1
70	13DCB17	1	B17	1	13CB17	1
95	13DCB20	1	B20	1	13CB20	1
120	13DCB22	2	B22	1	13CB22	1
150	13DCB25	2	B25	1	13CB25	2
185	13DCB27	2			13CB27	2
240	13DCB30	2			13CB30	2
300	13DCB32	2			13CB32	2
400					13C21B38*	3

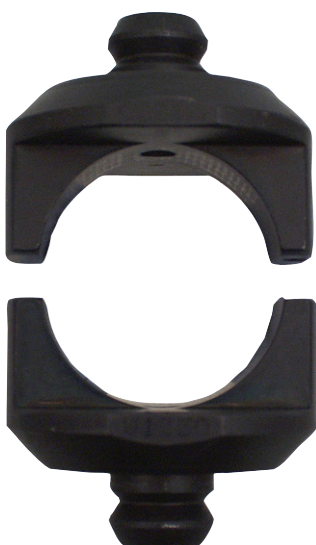


One and two crimps.



Three crimps.

*used without die holder V13C21



Die holders V1330 (pair).



B type dies.



Integrated dies 13CB20.

Accessories for Cu crimping with V1300C2, DV1300C2, V1311C2-A

- Note that KRF terminals may be used on flexible (IEC60228, class 5) as well as stranded (class 2) conductors and that KR D and KRT terminals are used on stranded conductors.
- Be sure to use dies exactly matching the terminal.
- Die holder V1330 is designed to allow crimping of straight as well as angular terminals.
- We recommend using the Dual System for multi-stranded Cu conductors.

Crimp dies for hexagonal crimping of Cu terminals and connectors

Supplied as a pair.

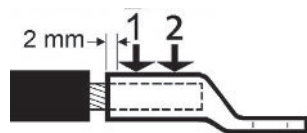
All dies type 13CBxx are used without die holder.

All dies type BxxDIN are used with die holder V1330.

mm ²	KRD/KSD				KRT/KST			
	Dies	No. of crimps	Integrated dies	No. of crimps	Dies	No. of crimps	Integrated dies	No. of crimps
16	B8	1	13CB8	1	B8.5	1	13CB8.5	1
25	B9	1	13CB9	1	B10	1	13CB10	1
35	B11	1	13CB11	1	B12	1	13CB12	1
50	B12	1	13CB12	1	B14	1	13CB14	1
70	B14	1	13CB14	1	B16	1	13CB16	1
95	B16	1	13CB16	1	B18	1	13CB18	1
120	B19	1	13CB19	1	B19	1	13CB19	1
150	B22	1	13CB22	1	B22	1	13CB22	1
185			13CB25	2	B24	1	13CB24	2
240			13CB27	2			13CB26	2
300			13CB30	2			13CB30	2
400			13CB32	2			13CB32	2



Integrated dies 13CB20.



One and two crimps.

For oval crimping of Cu branch connectors (C-sleeves)

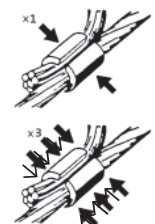
Supplied as a pair. All dies type BCxx are used with die holder V1330.

All dies type 13CBCxx are used without die holder.

Through conductor mm ²	Branch mm ²	mm ²	Dies	No. of crimps
6-16	6-16	Total: 12-26	BC5	1
5-25	5-25	Total: 30-50	BC6	1
6-50	6-50	Total: 50-100	BC8-9	1
25-120	25-120	Total: 95-190	13CBC13	3
25-185	25-185	Total: 175-240	13CBC15	3



BC type dies.



One and three crimps.